

### FOR OIL FIELD AND PRODUCED WATER

Over the last two decades AATech, Inc. has supplied water treatment systems to oil field operations, both locally and nationwide. The ever present need for increased oil recovery necessitates the supply of extremely low hardness waters for steam and caustic flood recovery techniques. Downstream softening systems require oil removal down to 1-5 ppm. Filtration systems used to obtain this low level of oil will benefit by first using AATech's Flotation Unit for oil reductions as much as 95%, thereby, removing as much oil as possible resulting in more efficient down stream filtration. AATech's flotation units are an excellent choice for pretreatment prior to filtration and softening because of their trouble free operation.

This line of packaged water treatment equipment was developed mainly for oil field steam flood water treatment. The units are virtually trouble free as there are no moving parts and there are no VOC emissions due to leaking seals or stuffing boxes as are associated with conventional four celled IGF units..

This equipment uses closed circuit recirculation of both treated water and air, along with proper chemical addition, to provide a oil/water/air interface for effective separation and oil removal.

Chemically treated oily water enters the unit and air/gas is ducted from within vessel to produce a stream of water/oil and fine bubbles. Oil, which by chemical treatment, has an affinity to the air which floats to the top as a froth where it is skimmed off for disposal or reprocessing.

De-oiled water exits through the bottom of the tank and is transferred to downstream equipment.

The AATech Flotation Units offer many features as standard that may be optional by other equipment manufacturers. Many years of valuable field experience allows AATech to provide a system designed to our high standards for unattended service with a minimum of routine maintenance. AATech Flotation Units systems are an excellent choice for any boilers, heaters, or generator pretreatment where oil removal is required.



#### STANDARD FEATURES

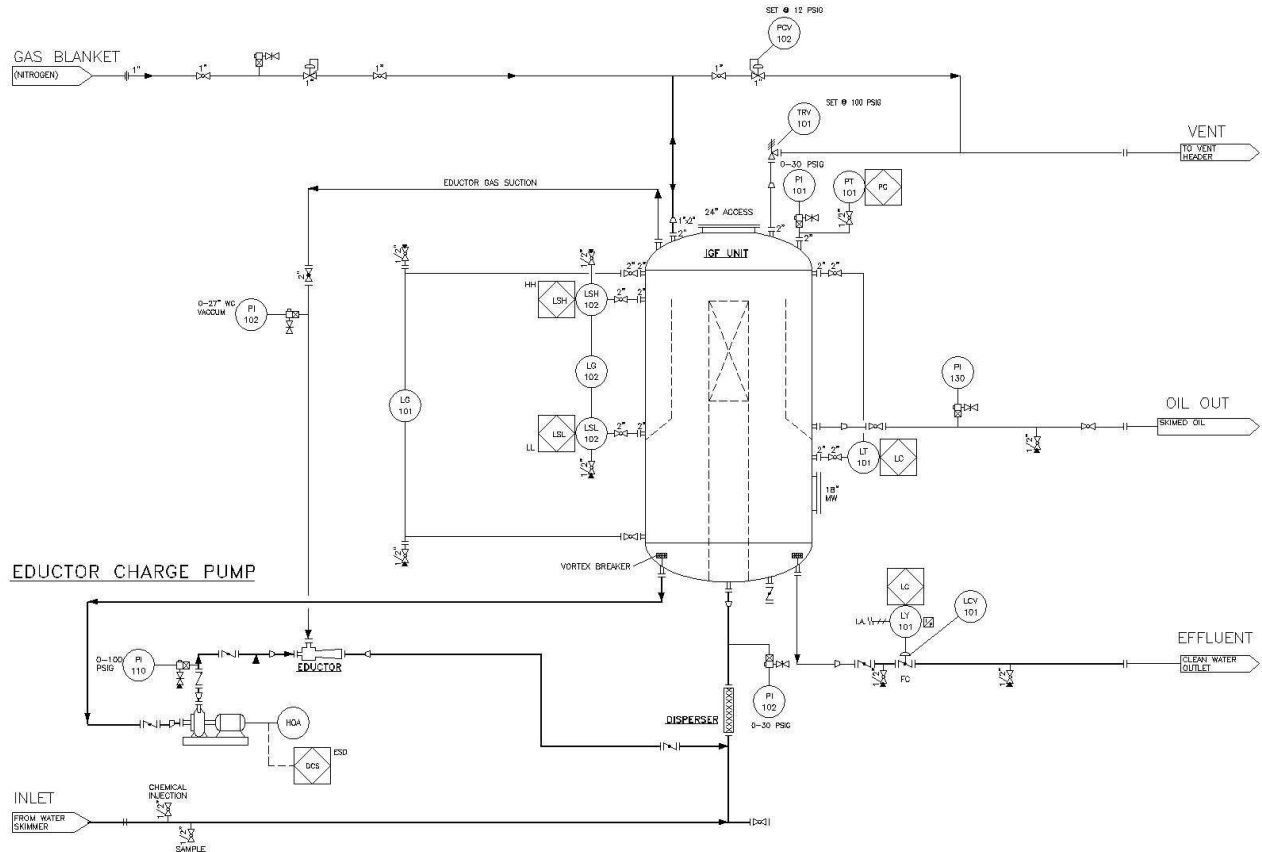
- Skid mounting, minimizing field costs
- Recirculation Pumps
- Inlet, outlet and gas pressure gauges
- Sample cocks for water testing
- Viewports to verify operation during service
- 100 PSI ASME code vessels/epoxy lined
- ASME B31.3 carbon steel face piping
- Polyurethane coated exterior for corrosion control
- 316SS non-lined wetted materials
- Solenoid operated automatic valves actuated by local programmable controller
- Class 1, Division 2, Group C or D area usage

#### OPTIONAL FEATURES

- Corrosion Allowance
  - Distribution Pumps
  - Oil Skimmings Pumps
  - Polymer Injection System
  - Epoxy Lined Piping
  - Oil Analyzer
  - Custom PLC controls
  - Human machine interface screens
-

## SPECIFICATIONS

MODEL NUMBER (1000 BPD)	VESSEL DIAMETER (INCHES)	MAXIMUM CAPACITY (GPM)	APPROXIMATE SHIP WEIGHT (LBS)	LENGTH (FEET)	WIDTH (FEET)	IN/OUT PIPE SIZE (INCHES)	MINIMUM POWER (HP)
FLOT-2	36	60	7,000	9'-0"	6'-0"	2	5
FLOT-3	42	90	8,000	9'-6"	6'-6"	3	7.5
FLOT-5	48	150	12,000	12'-0"	6'-10"	3	15
FLOT-8	60	250	15,000	14'-0"	7'-0"	4	20
FLOT-10	66	300	16,000	15'-5"	7'-3"	4	25
FLOT-15	72	450	17,000	16'-10"	7'-9"	6	40
FLOT-20	84	600	18,000	17'-6"	8'-3"	6	50
FLOT-30	96	900	19,000	20'-0"	12'-0"	6	75
FLOT-40	108	1200	21,000	24'-0"	14'-0"	8	100
FLOT-50	120	1500	24,000	25'-0"	15'-0"	8	150
FLOT-60	132	1750	28,000	26'-0"	16'-0"	10	150
FLOT-70	144	2000	32,000	27'-0"	17'-0"	10	200
FLOT-100	156	3000	35,000	28'-0"	18'-0"	12	250



15342 Valencia Avenue, Fontana, CA 92335  
 Phone: (909) 854-3200 Fax: (909) 854-3300  
 E-mail: Aatecwater@aol.com  
 Website: aatechwater.com