

FOR WASTE WATER, OIL FIELD AND PRODUCED WATER

Over the last two decades AATech, Inc. has supplied water treatment systems to waste water and oil field operations, both locally and nationwide. The AATech CPI unit is designed to remove oil and solids by gravity separation. Downstream flotation or filtration units will benefit by low cost oil and solids removal typically to less than 100 ppm effluent levels. Downstream systems will benefit by seeing longer run lengths between cleaning cycles when AATech's CPI units are installed upstream. AATech's CPI units are an excellent choice for pretreatment prior to flotation, filtration and softening because of their low cost and trouble free operation.

This line of packaged water treatment equipment was developed mainly for waste streams but has also been successfully used in oil field steam flood water treatment. The units are virtually trouble free as there are no moving parts and there are no VOC emissions as our units have a closed top.

Oily solids laden water enters the unit at one end and passes through a corrugated plate pack. The plates in the pack are spaced 3/4" apart which when combined with laminar flow, allows the oil to rise and the solids to fall for a much smaller distance of separation as compared to standard two and three phase separators.

De-oiled water exits through the other end of the tank and is transferred to downstream equipment by gravity. Oil is collected in a oil skim weir box for disposal or recovery. The solids accumulate in the bottom of the tank where they can be pumped out using positive displacement pumps.

The AATech CPI Units offer many features as standard that may be optional by other equipment manufacturers. Many years of valuable field experience allows AATech to provide a system designed to our high standards for unattended service with a minimum of routine maintenance. AATech CPI Units systems are an excellent choice for any waste water or oil field service where oil and solids removal is required.

AATech offers it's customers the very best equipment at a most affordable price. We invite you to compare our features with anyone's, then check our price. You will be very pleasantly surprised. We offer a complete line of systems, ranging from pre-engineered to full custom designs, to meet your specific requirements.



STANDARD FEATURES

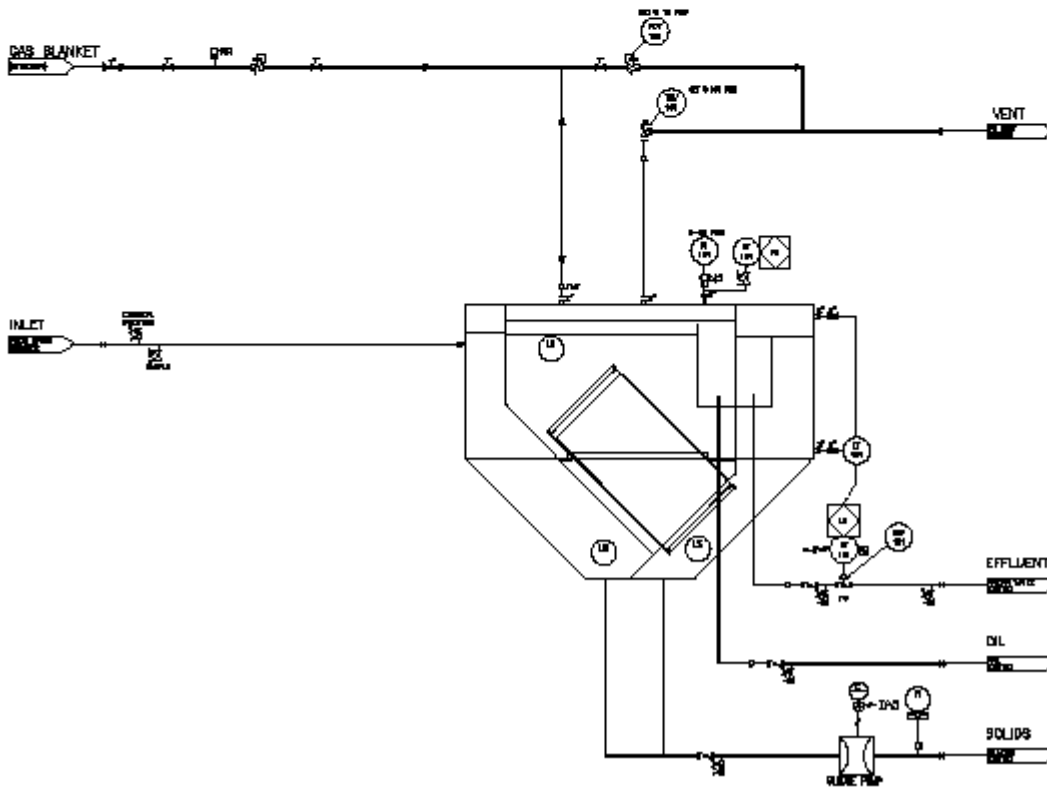
- Stand Alone Oil/Solids Separation
- Designed to Minimize Freight Costs
- Removable Plate Pack
- Solids Removal Pumps
- Sample Cocks for Water Testing
- Viewports to Verify Operation Levels
- Welding per ASME Section IX
- Epoxy Coated for Corrosion Control
- 316SS and FRP Non-lined Wetted Materials
- Class 1, Division 2, Group C or D area Usage

OPTIONAL FEATURES

- Corrosion Allowance
 - Instruments for Level Monitoring
 - Distribution Pumps
 - Oil Skimmings Pumps
 - Epoxy Lined Piping
 - Oil Analyzer
 - Custom PLC controls
 - Hetrion or Stainless Plate Packs for Highly Corrosive or High temperature Fluids
-

SPECIFICATIONS

MODEL NUMBER (1000 BPD)	NUMBER OF PLATE PACKS	MAXIMUM CAPACITY (GPM)	APPROXIMATE SHIP WEIGHT (LBS)	APPROXIMATE OPERATING WEIGHT (LBS)	LENGTH (INCHES)	WIDTH (INCHES)	HEIGHT (INCHES)
CPI-5	1	150	6,000	27,000	144"	60"	113"
CPI-10	2	300	8,000	45,000	144"	105"	113"
CPI-15	3	450	10,000	64,000	153"	144"	113"
CPI-20	4	600	13,500	84,000	201"	144"	113"



15342 Valencia Avenue, Fontana, CA 92335
 Phone: (909) 854-3200 Fax: (909) 854-3300
 E-mail: Aatecwater@aol.com
 Website: aatechwater.com